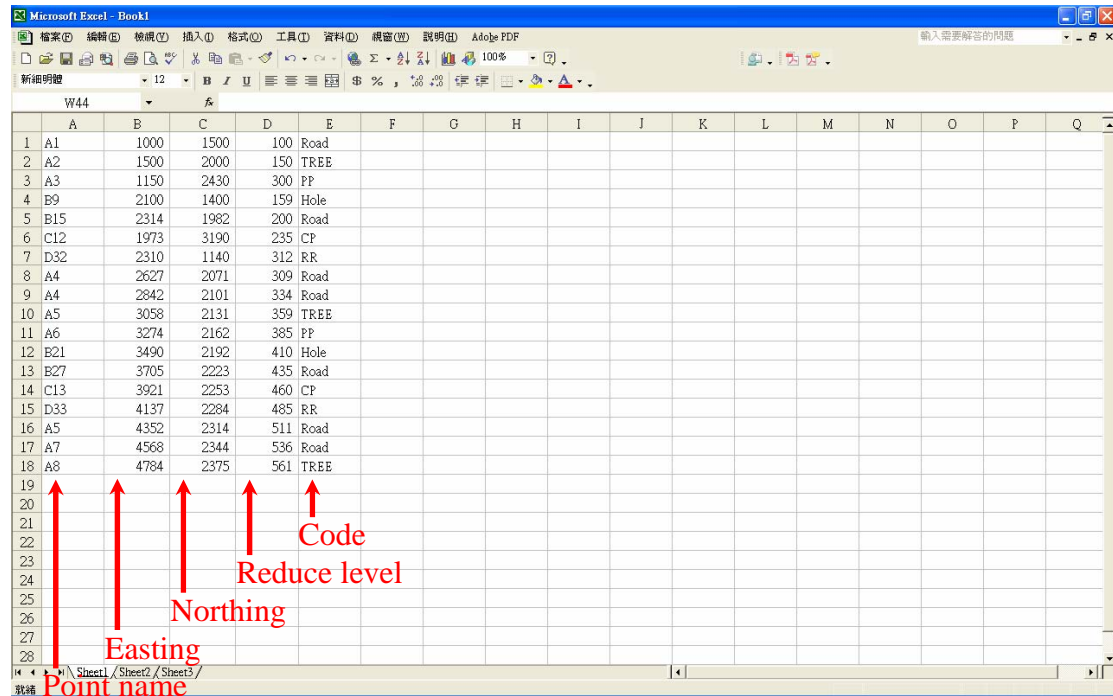


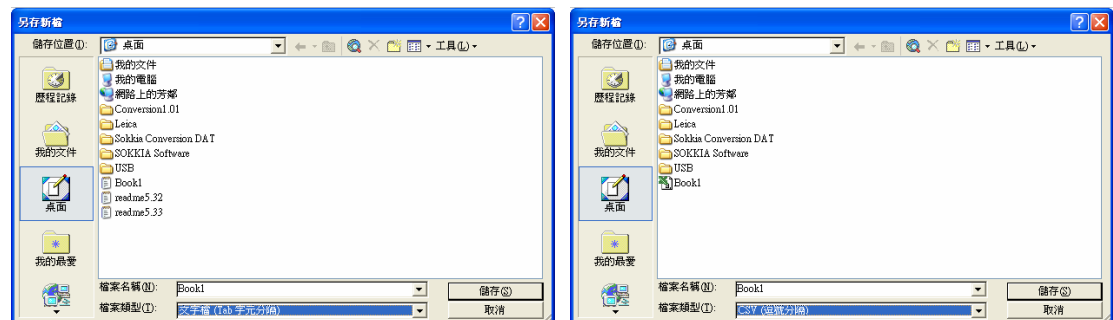
SOKKIA - SETX

Uploading File – USB / CF Card

1. Start *Excel* and input point name, Easting, Northing, reduce level and code.

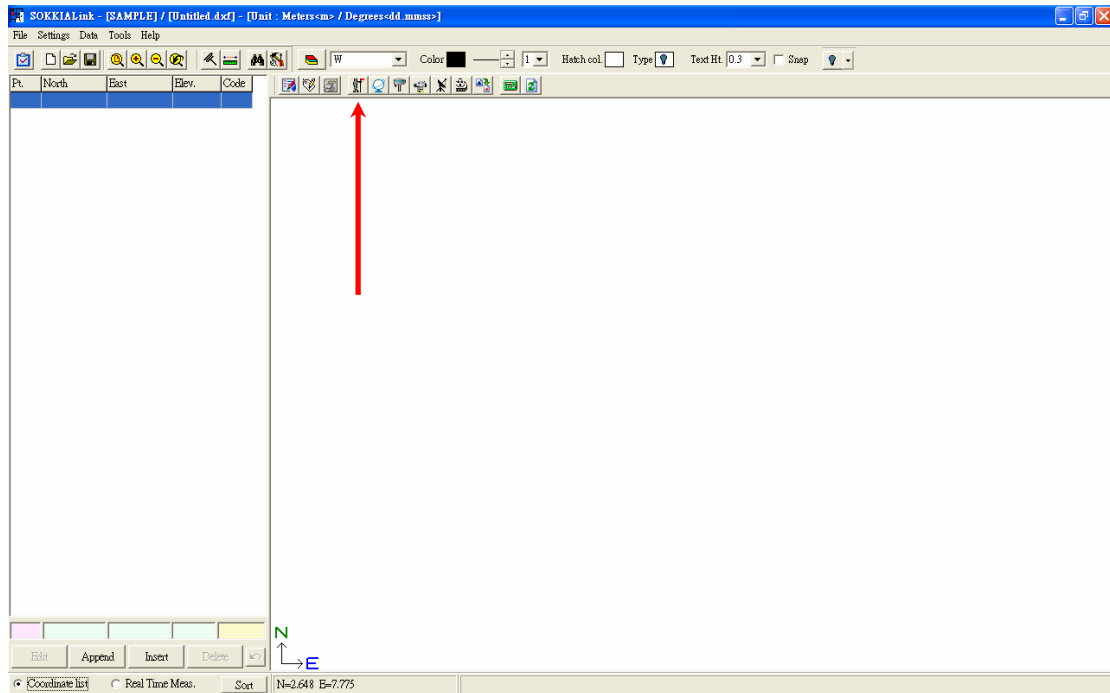


2. Then save the file as **.Tab** or **.CSV**.

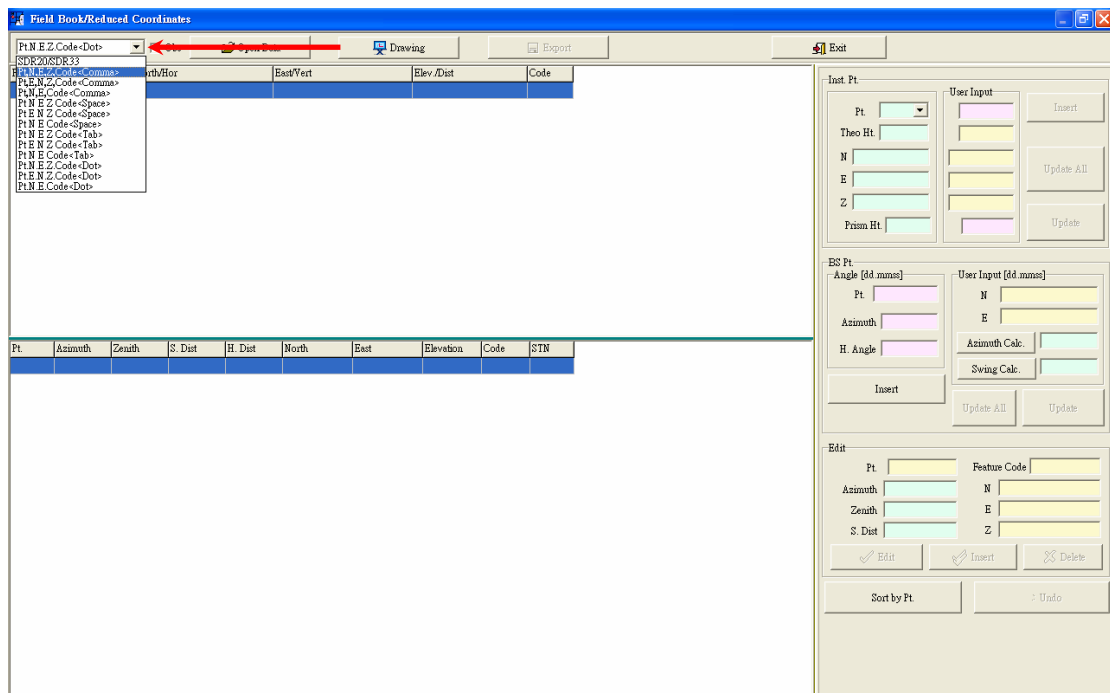


SOKKIA - SETX

3. Click **Total Station**  on the shortcut bar (or go to **Data** → **Total Station**).

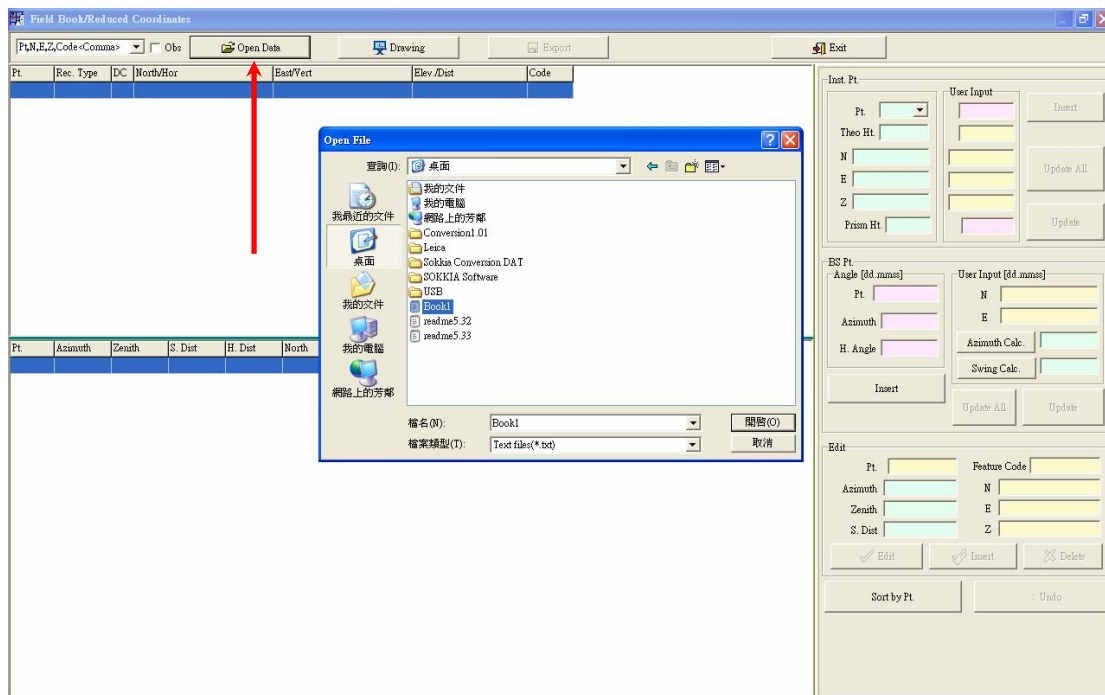


4. Select the suitable format for the file.

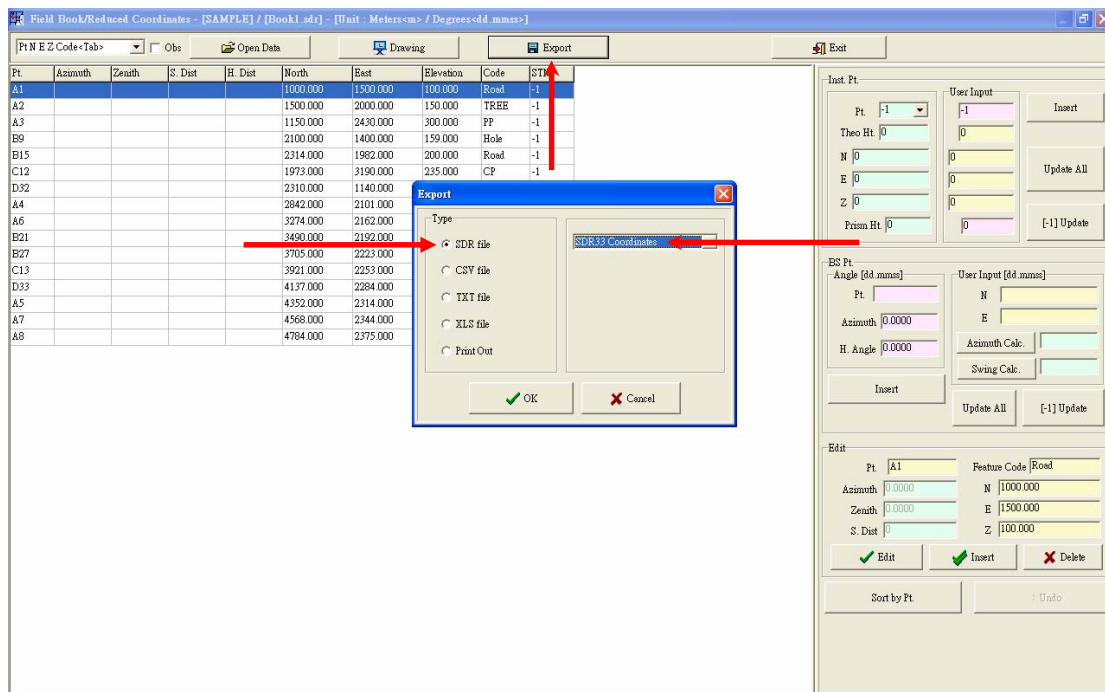


SOKKIA - SETX

5. Click **Open Data** and select the file.

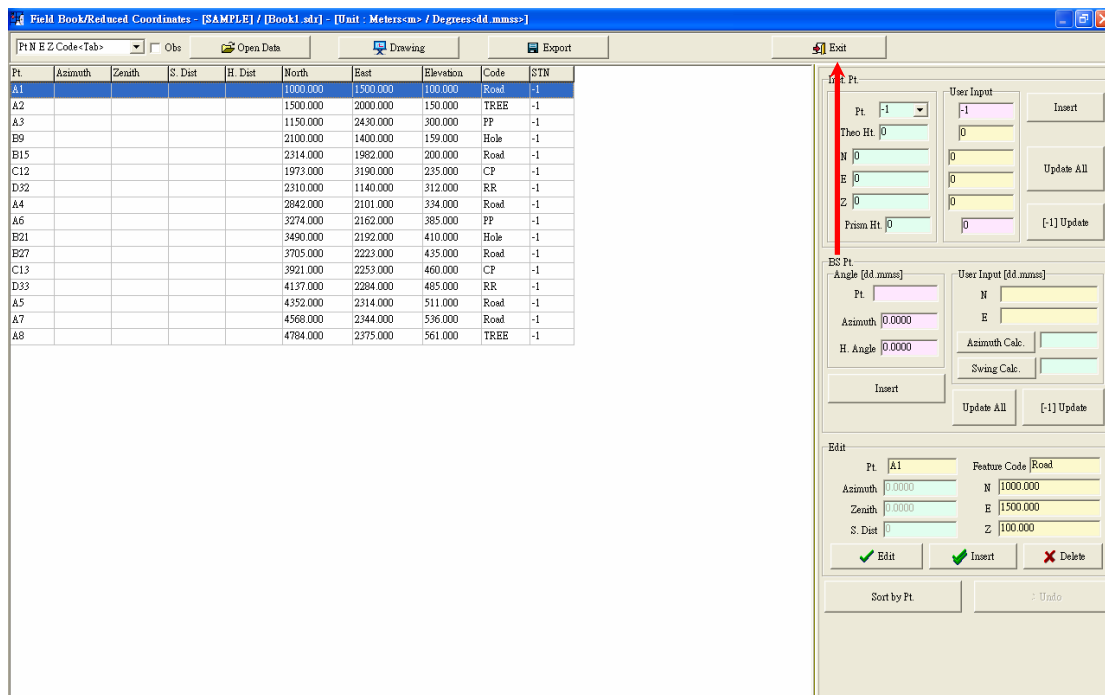


6. All inputted points data will show on the screen, click **Export** for creating SDR file. Select **SDR file** and **SDR33 Coordinates**. Click **OK**, select the destination and create file name, then click **Save**.



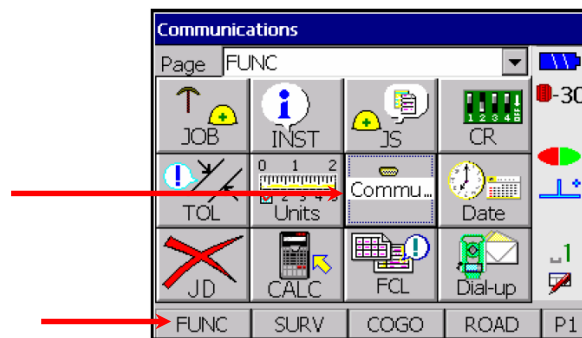
SOKKIA - SETX

7. Click **Exit** to go back to main screen. **SOKKIA Link** can be exit now.

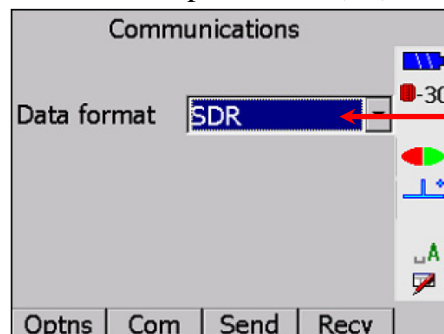


8. Copy and paste the file into USB or CF card.

9. About the instrument, attach USB or CF card to respective slot, and then select **COMMUNICATION (COM)** from the **FUNCTION (FUNC)** menu.

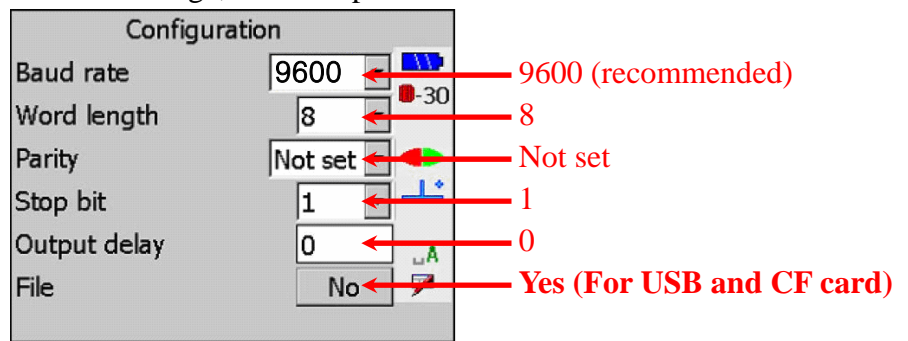


10. Set Data format field to **SDR**, and press **Com (F2)**.

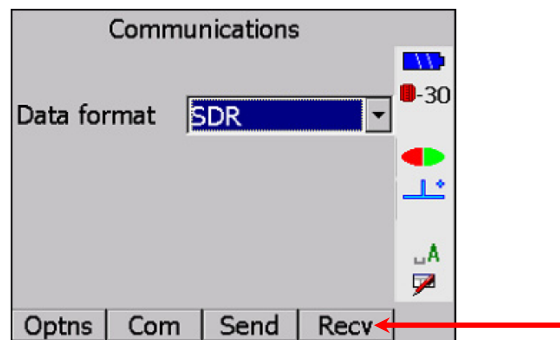


SOKKIA - SETX

11. Set the configuration as below image, and then press **ENTER**.



12. Press **Recv (F4)**. The screen will show *Removable Disk*.



13. Select the *Removable Disk* and open the .SDR file.
14. Press any key to escape when finished sending data.
15. Select **JOB**, **>RED EXPORT 33** represent uploaded file. And its name can be change at **Job Settings**.