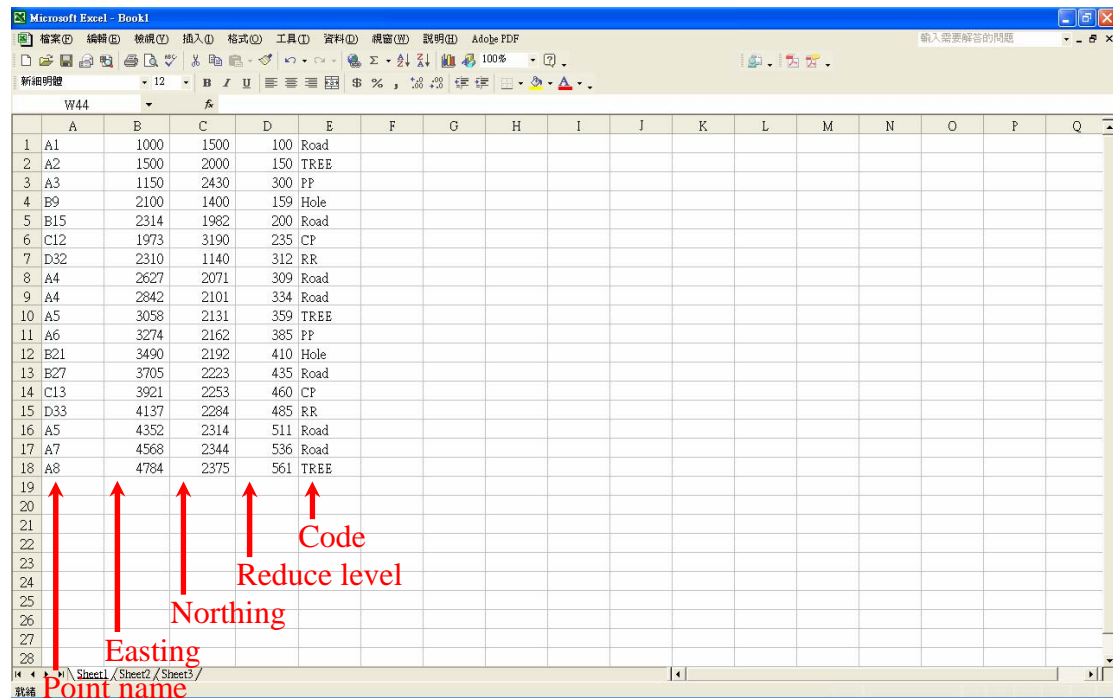


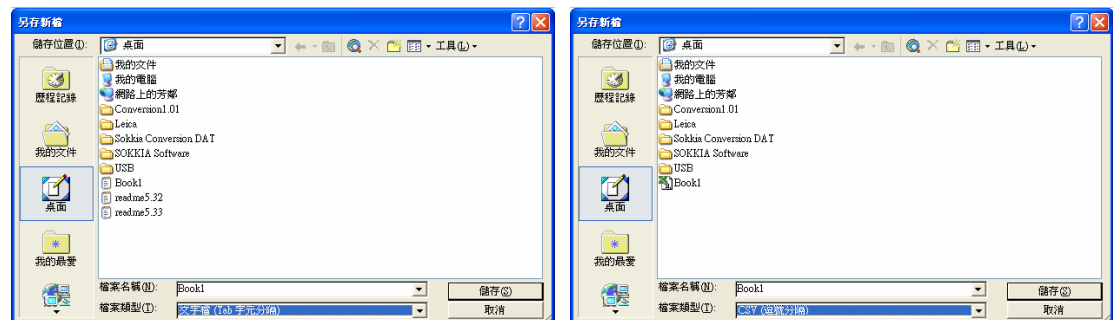
SOKKIA - SETX

Uploading File – Serial Cable

1. Start *Excel* and input point name, Easting, Northing, reduce level and code.

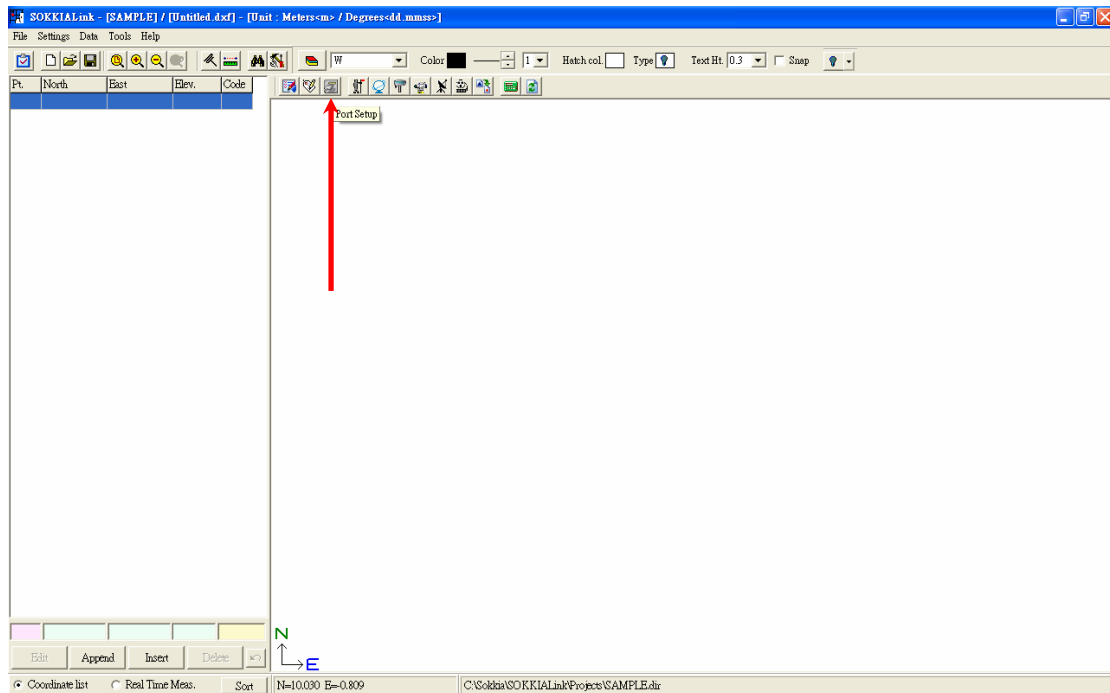


2. Then save the file as **.Tab** or **.CSV**.

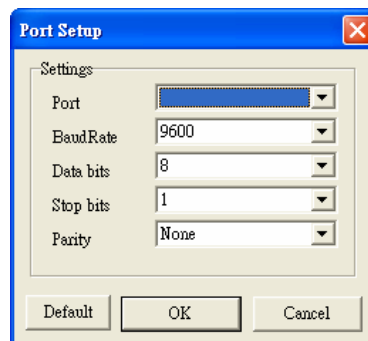


SOKKIA - SETX

3. Start *SOKKIA Link* and click **Port Setup**  on the shortcut bar (or go to **Settings → Port Setup**).

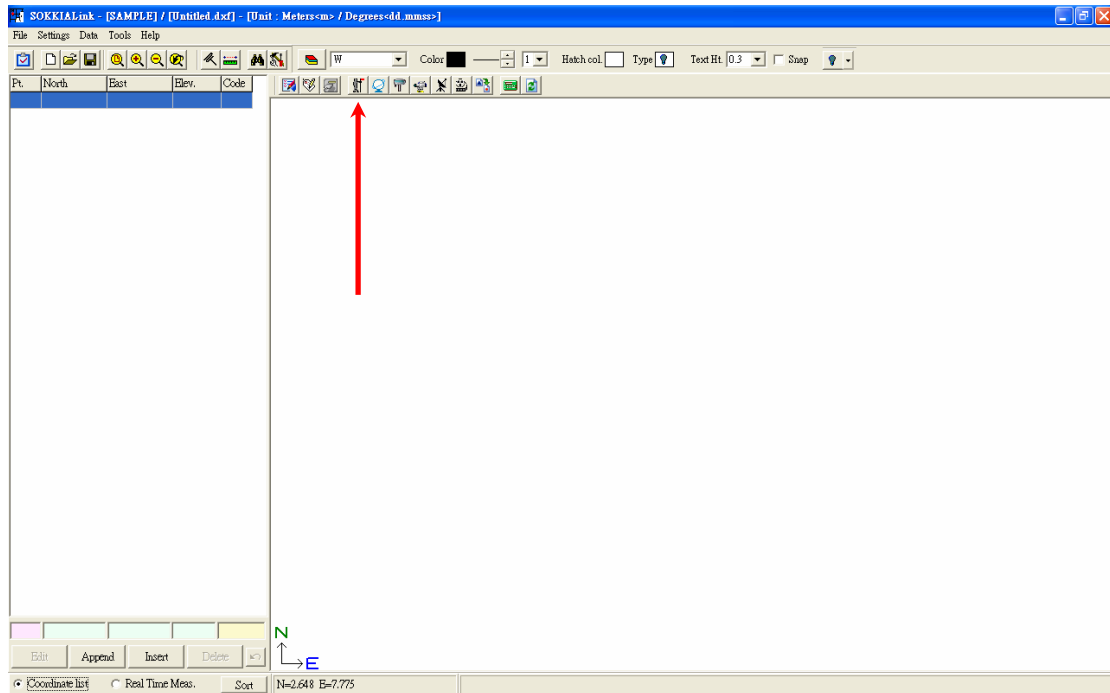


4. Select the suitable port and set other configuration as same as the instrument, then click **OK**.

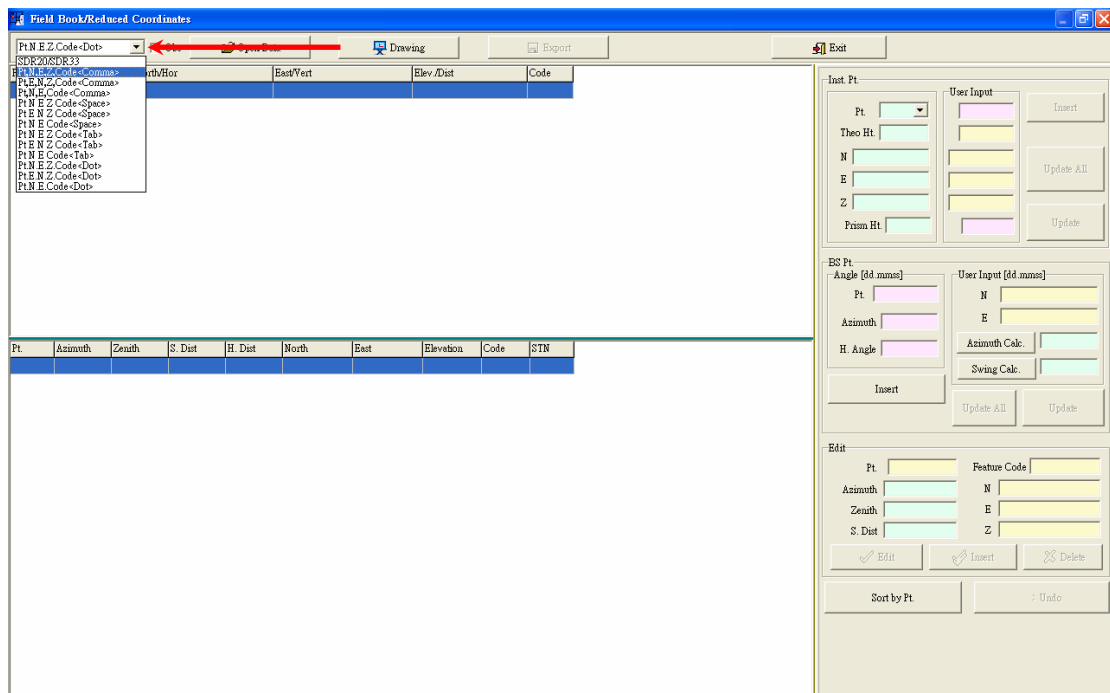


SOKKIA - SETX

- Click **Total Station**  on the shortcut bar (or go to **Data** → **Total Station**).

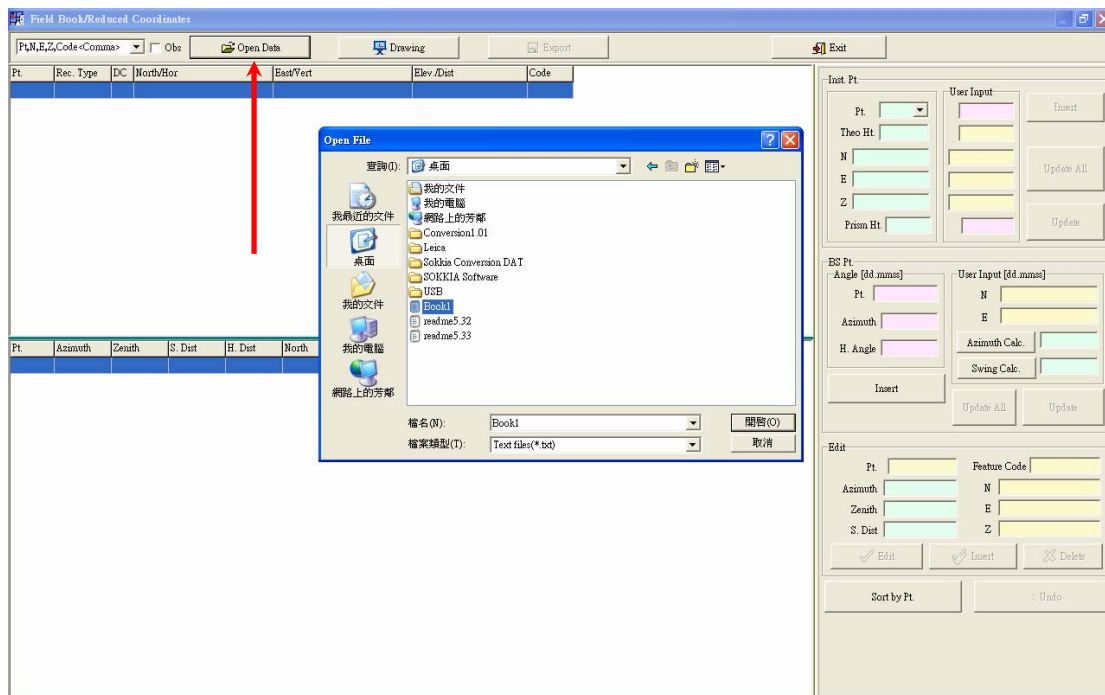


- Select the suitable format for the file.

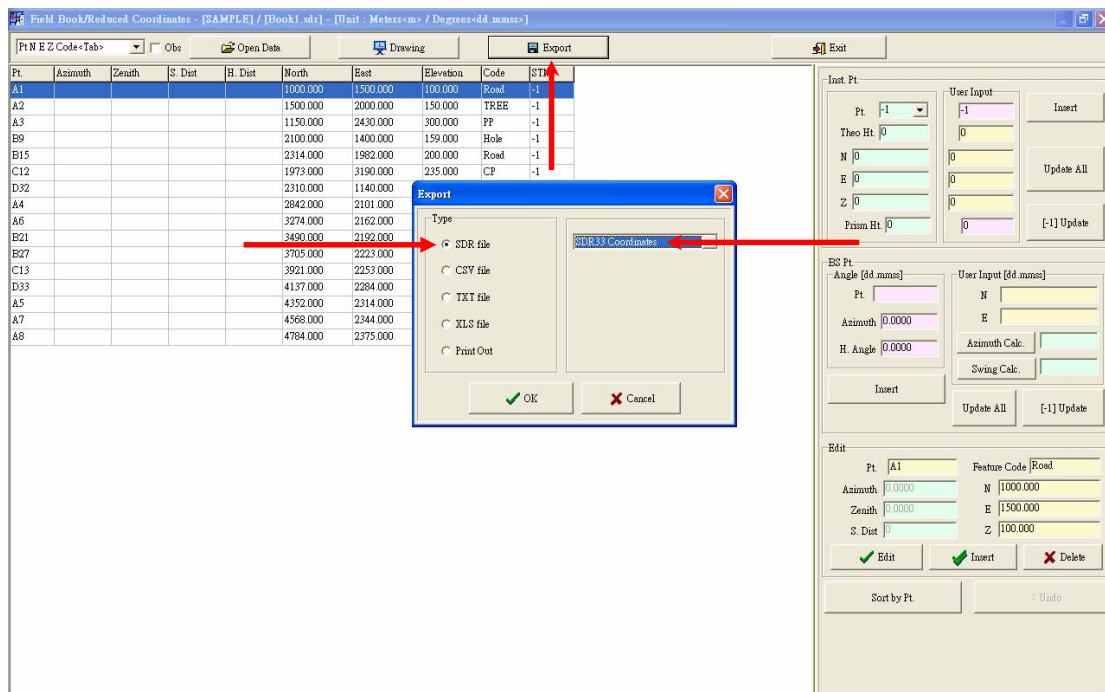


SOKKIA - SETX

7. Click **Open Data** and select the file.



8. All inputted points data will show on the screen, click **Export** for creating SDR file. Select **SDR file** and **SDR33 Coordinates**. Click **OK**, select the destination and create file name, then click **Save**.



SOKKIA - SETX

9. Click **Exit** to go back to main screen of *SOKKIA Link*.

The screenshot shows the 'Field Book/Reduced Coordinates' window. The main area contains a table with columns: Pt, Azimuth, Zenith, S. Dist, H. Dist, North, East, Elevation, Code, and STN. The table lists 17 points (A1 through A8) with their respective coordinates and feature codes. On the right side, there are three control panels: 'New Pt', 'ES Pt', and 'Edit'. A red arrow points to the 'Exit' button located in the top right corner of the window's title bar area.

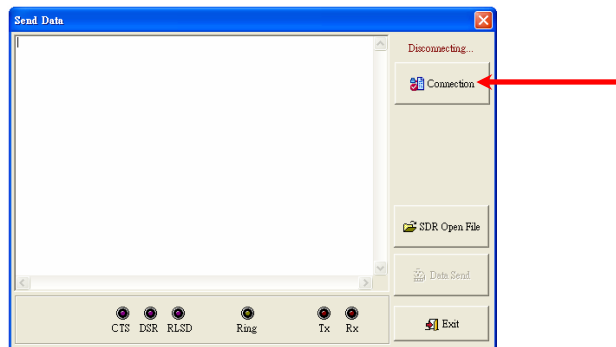
Pt	Azimuth	Zenith	S. Dist	H. Dist	North	East	Elevation	Code	STN
A1					1000.000	1500.000	100.000	Road	-1
A2					1500.000	2000.000	150.000	TREE	-1
A3					1150.000	2430.000	300.000	PP	-1
B9					2100.000	1400.000	159.000	Hole	-1
B15					2314.000	1982.000	200.000	Road	-1
C12					1973.000	2190.000	235.000	CP	-1
D32					2310.000	1140.000	312.000	RR	-1
A4					2842.000	2101.000	334.000	Road	-1
A6					3274.000	2162.000	385.000	PP	-1
B21					3490.000	2192.000	410.000	Hole	-1
B27					3705.000	2223.000	435.000	Road	-1
C13					3921.000	2253.000	460.000	CP	-1
D33					4137.000	2284.000	485.000	RR	-1
A5					4352.000	2314.000	511.000	Road	-1
A7					4568.000	2344.000	536.000	Road	-1
A8					4784.000	2375.000	561.000	TREE	-1

10. Click **Send Data**  on the shortcut bar (or go to **Data** → **Send Data**).

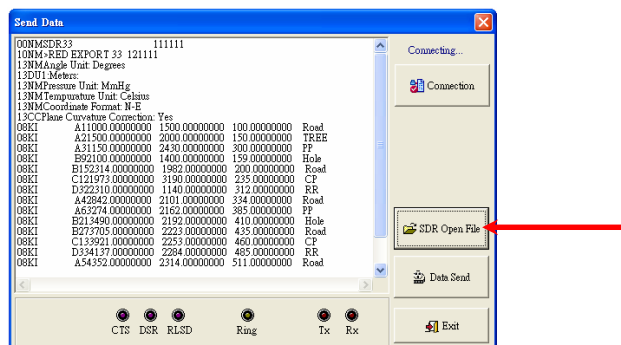
The screenshot shows the main 'SOKKIA Link' window. The top menu bar includes 'File', 'Settings', 'Data', 'Tools', and 'Help'. Below the menu is a toolbar with various icons. A red arrow points to the 'Send Data' icon, which is a small square with a document and a right-pointing arrow. The main area is a large drawing canvas. At the bottom, there is a status bar showing 'N=10.015 E=0.865'.

SOKKIA - SETX

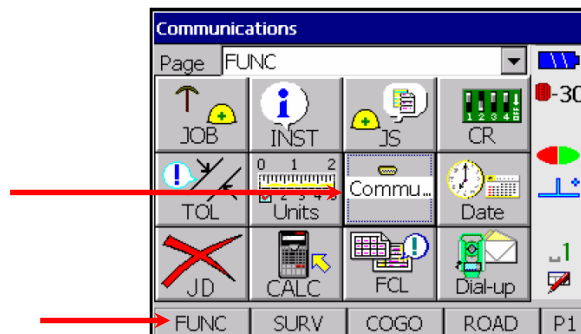
11. Click **Connection**.



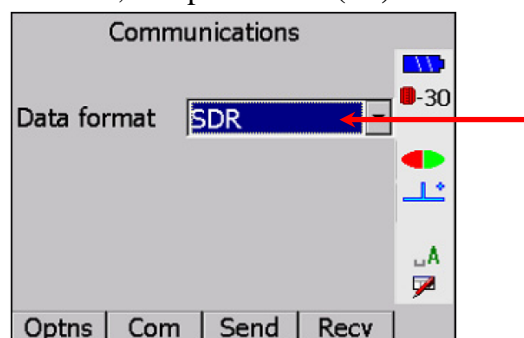
12. Click **SDR open File** and select the file which needs to upload.



13. About the instrument, select **COMMUNICATION (COM)** from the **FUNCTION (FUNC)** menu.

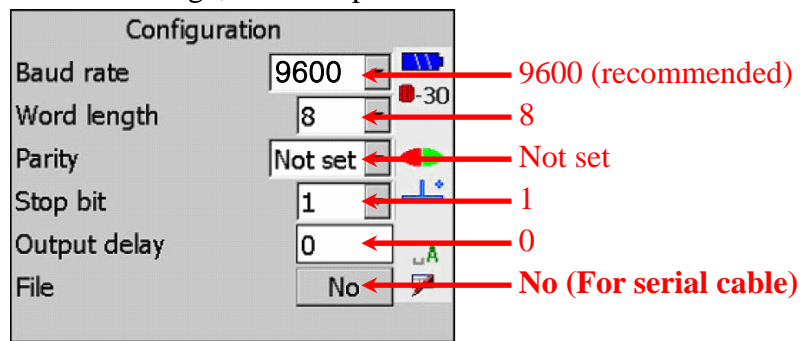


14. Set Data format field to **SDR**, and press **Com (F2)**.

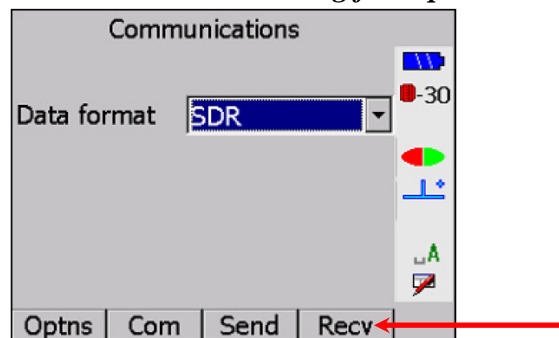


SOKKIA - SETX

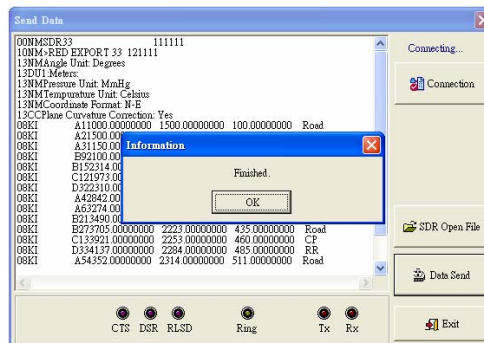
15. Set the configuration as below image, and then press **ENTER**.



16. Press **Recv (F4)**. The screen will show *Waiting for input...*



17. Back to *SOKKIA Link*, click **Data Send**. When finished, a window box will appear on computer and instrument, click **OK**.



18. About the instrument, press any key to escape.

19. Select **JOB**, >**RED EXPORT 33** represent uploaded file. And it can be change at **Job Settings**.