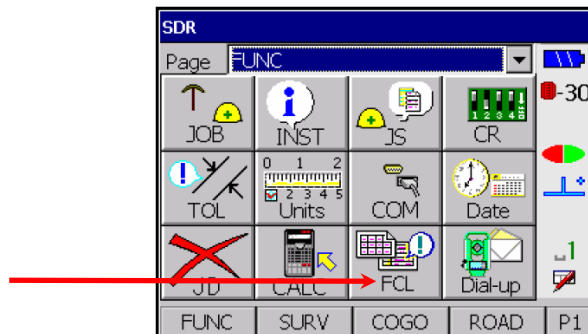


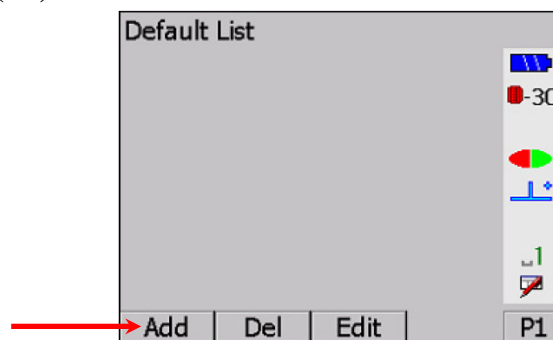
SOKKIA - SETX

Feature Codes

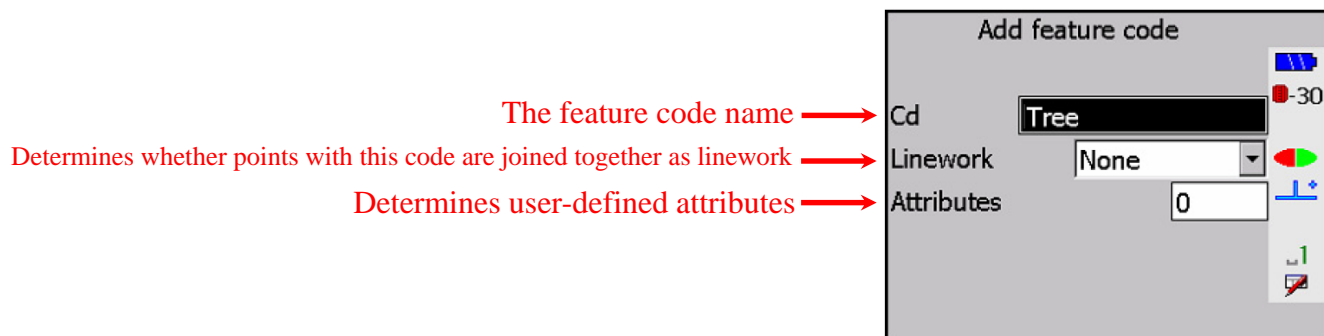
1. Select **FEATURE CODE LIST (FCL)** from the **FUNCTION (FUNC)** menu.



2. Press **Add (F1)**.



3. Input the information of code, and press **ENTER**. The code will save and you can input code continuously at *Add feature code*. After inputted all code, press **ESC**.



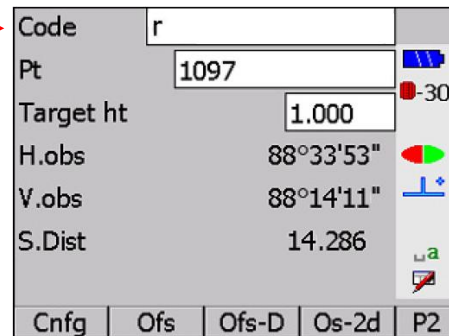
SOKKIA - SETX

4. All code is shown on list. If code is needed to edit, highlight that code then press **Edit (F3)**.

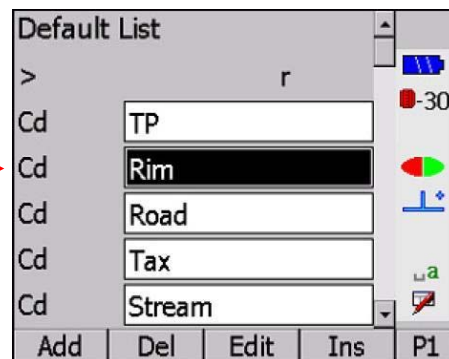


** When typing in a code field, just enter first letter of the feature code you want, the SETX searches for feature codes in the list. Highlighted appropriate feature code, press **ENTER** and the code will be entered into the code field.

Enter r to search for the code which started from r →



The first feature code beginning with r is highlighted →
Highlighted the needed code, then press ENTER



The code will be entered →

