
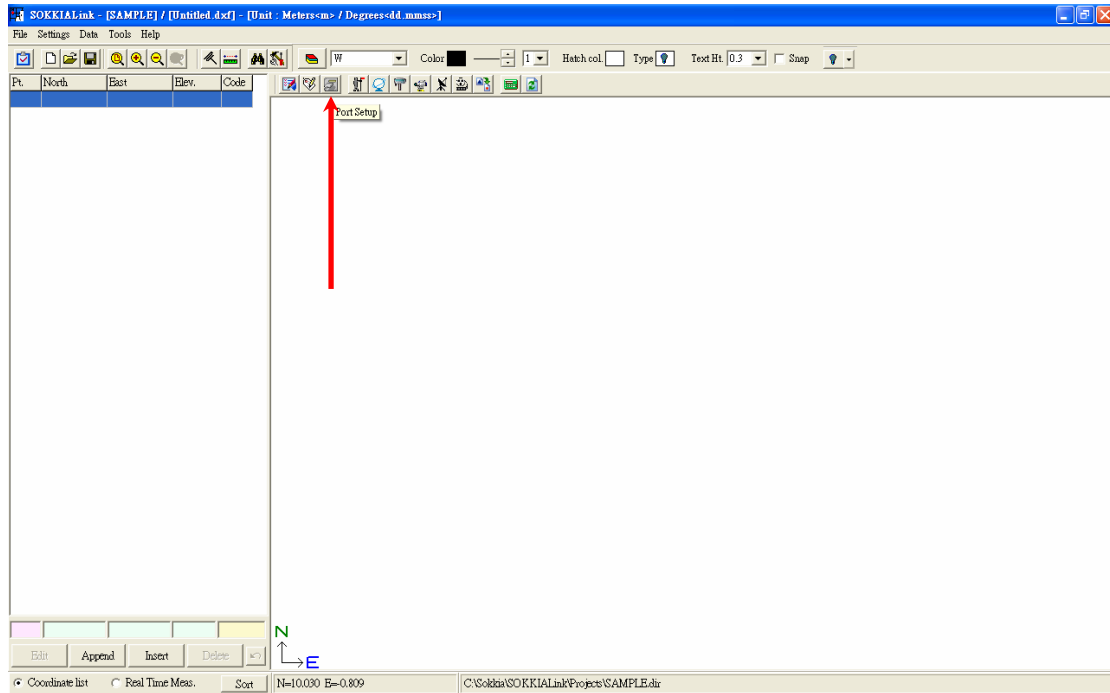


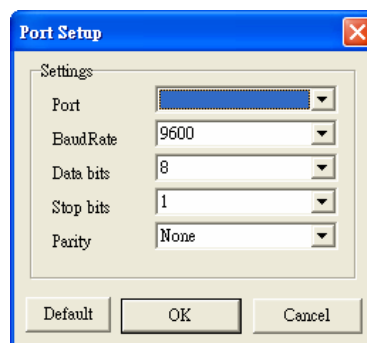
SOKKIA - SETX

Downloading File - Serial Cable

1. Attach the cable to the serial port of the instrument and computer.
2. On the computer, start *SOKKIA Link* and click **Port Setup**  on the shortcut bar (or go to **Settings** → **Port Setup**).

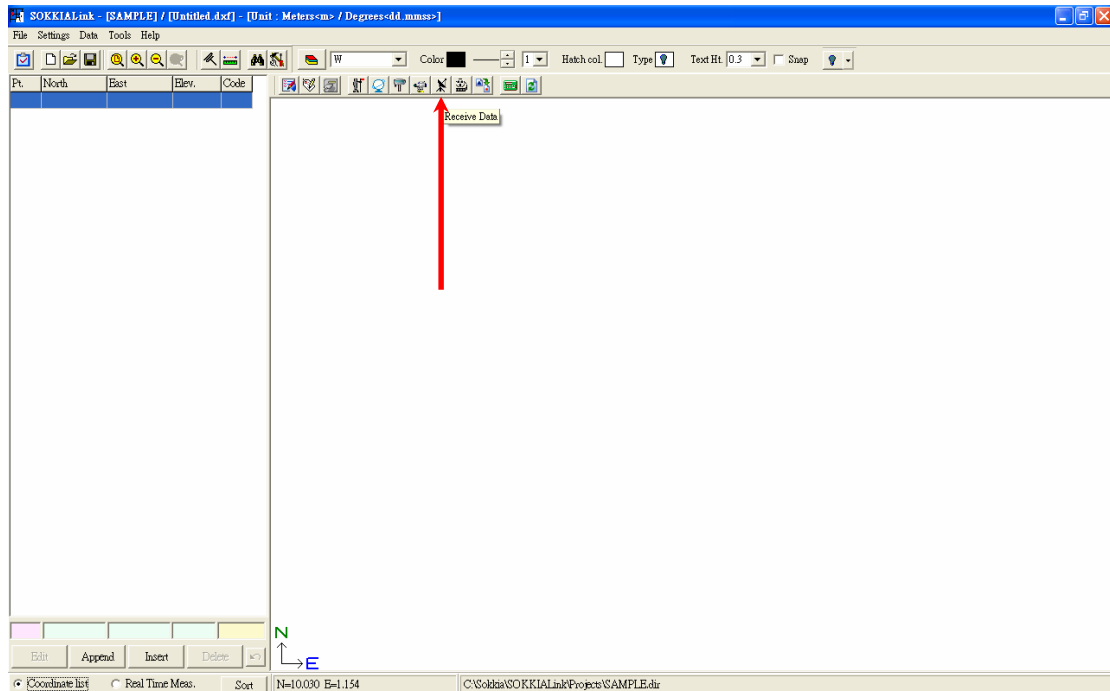


3. Select the suitable port and set other configuration as same as the instrument, then click **OK**.

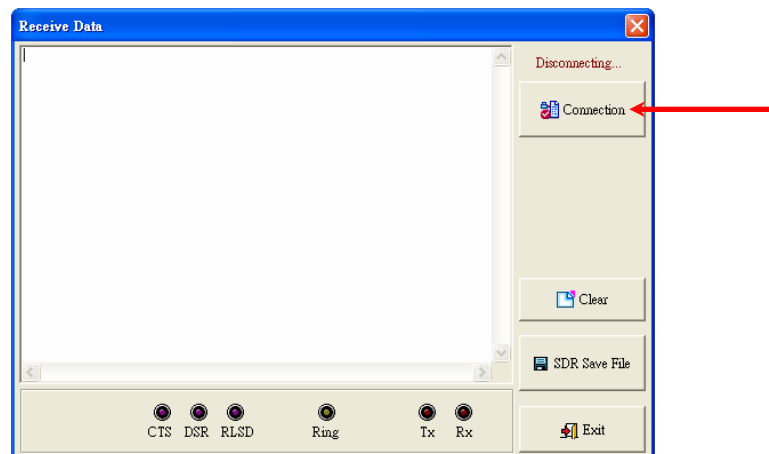


SOKKIA - SETX

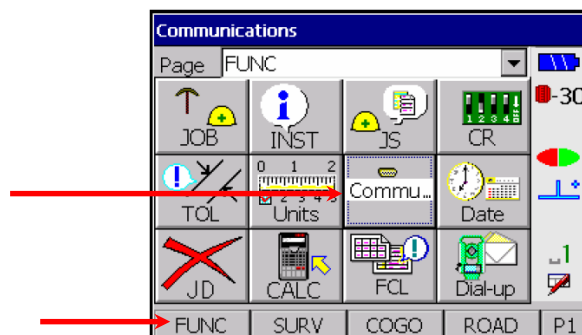
4. Click **Receive Data**  on the shortcut bar (or go to **Data** → **Receive Data**).



5. Click **Connection**.

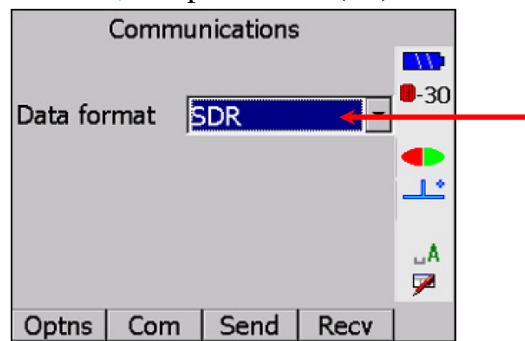


6. About the instrument, select **COMMUNICATION (COM)** from the **FUNCTION (FUNC)** menu.

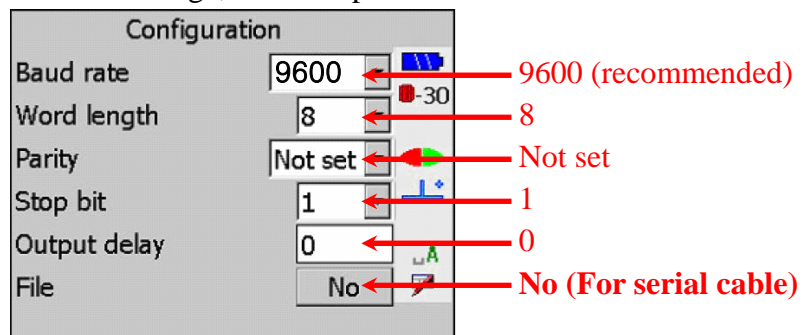


SOKKIA - SETX

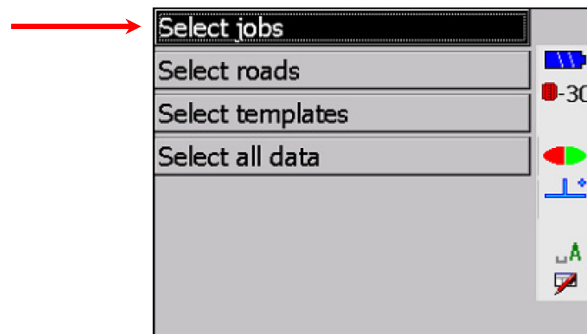
7. Set Data format field to **SDR**, and press **Com (F2)**.



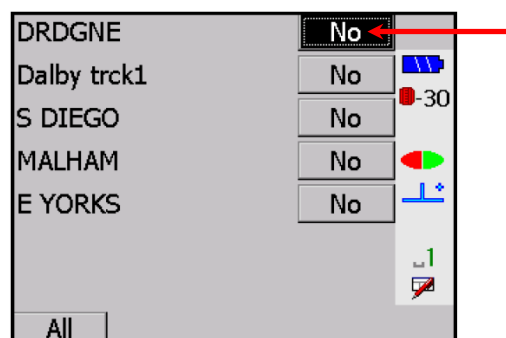
8. Set the configuration as below image, and then press **ENTER**.



9. Press **Send (F3)**, highlight the **Select jobs** then press **ENTER**.



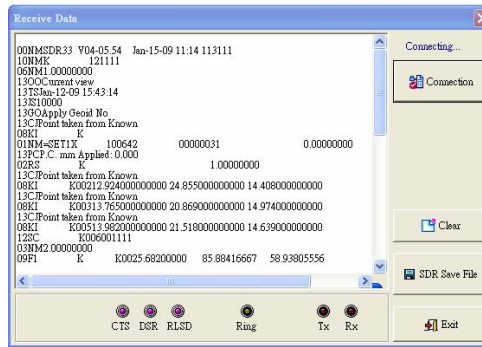
10. Uses **◀ / ▶** to change states of job from **No** to **Yes** or select **All (F1)** to select all jobs, then press **ENTER**.



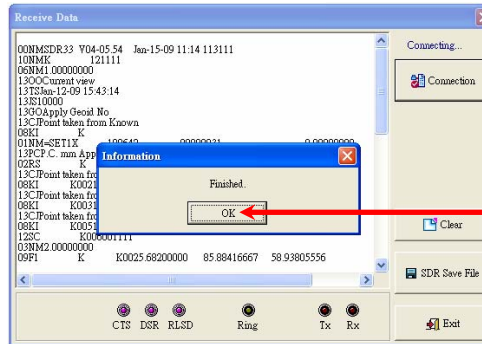
11. Sending status will show on the next page.

SOKKIA - SETX

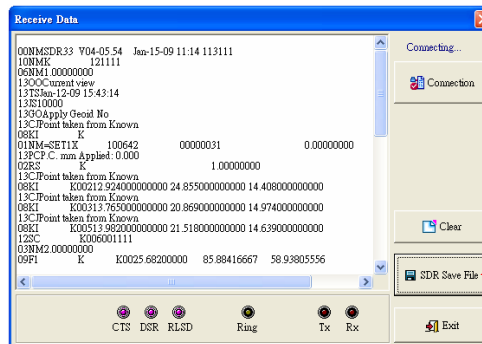
12. Those raw data will be show on the window.



13. When finished, a window box will appear on computer and instrument, click **OK**.

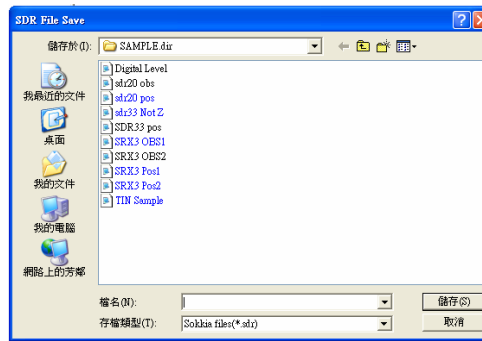


14. Click **SDR Save File** for saving raw data.

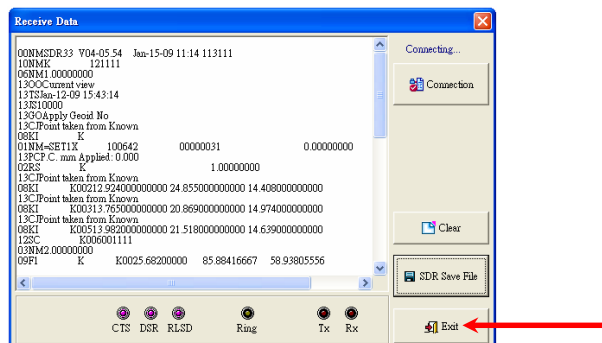


SOKKIA - SETX

15. Select destination and create file name, then click **Save**.



16. Click **Exit** for exiting *Receive Data* and close the *SOKKIA Link*.



** If the Total Station containing Bluetooth communication function, press **SETTINGS** and select **5. Comms**. Make sure **Comms mode** is **RS232C**.

