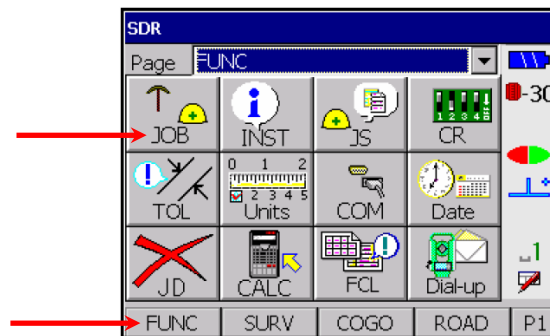


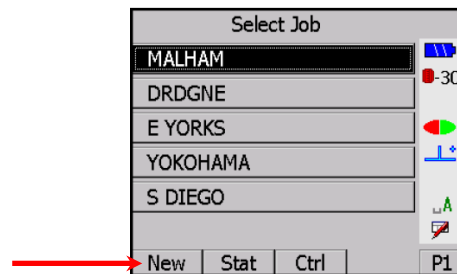
SOKKIA - SETX

Creating A New Job

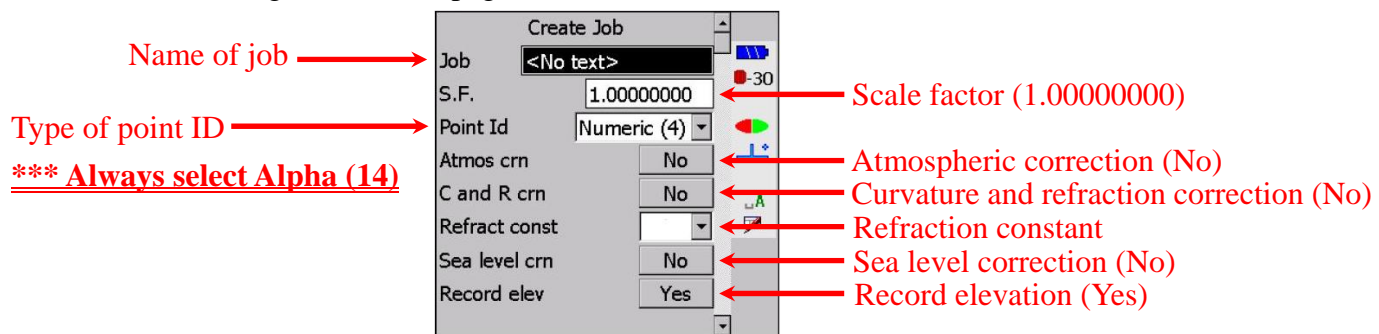
1. Press **PROGRAM**.
2. Select **JOB** from the **FUNCTIONS (FUNC)** menu.



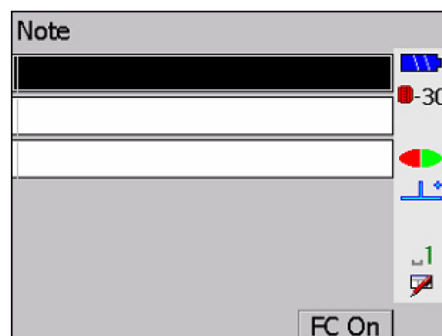
3. Press **New (F1)** to create a new job.



4. Input and select information about the job, then press **FUNC CTRL** and **ENTER** to go to the next page.



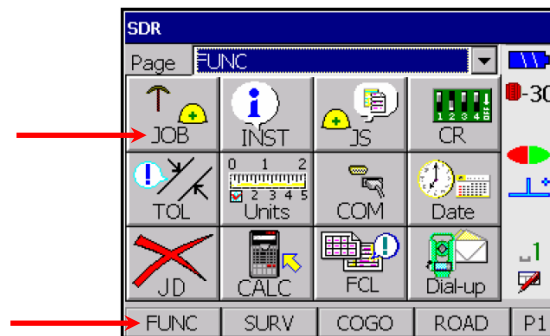
5. At *Note*, an unlimited number of job notes can be entered. Press **ENTER** when finished entering.



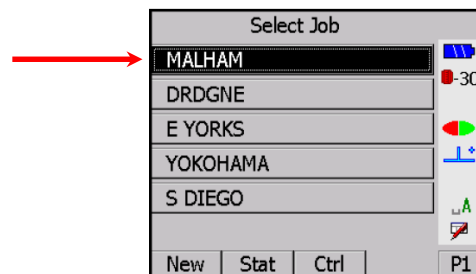
SOKKIA - SETX

Opening An Existing Job

1. Press **PROGRAM**.
2. Select **JOB** from **FUNCTIONS (FUNC)** menu.



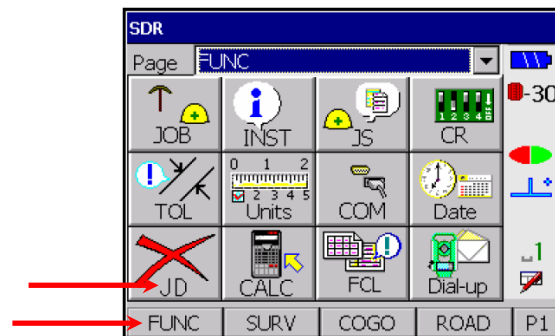
3. Highlight the job that is needed then press **ENTER**, the selected job will become the current job.



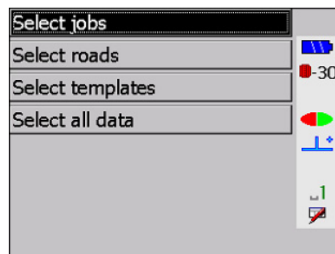
SOKKIA - SETX

Deleting A Job

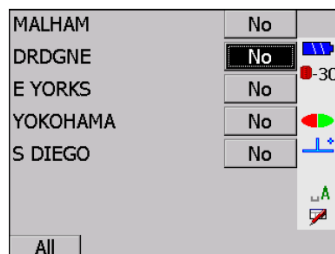
1. Press **PROGRAM**.
2. Select **JOB DELETE** from the **FUNCTIONS (FUNC)** menu.



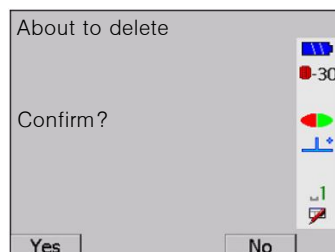
3. Highlight **Select jobs** and press **ENTER**.



4. Uses **◀ / ▶** to change states from **No** to **Yes** or select **All (F1)** to select all jobs for deletion, and then press **ENTER**.



5. Select **Yes (F1)** to continue or **No (F4)** to return to the **JOB DELETE** screen.

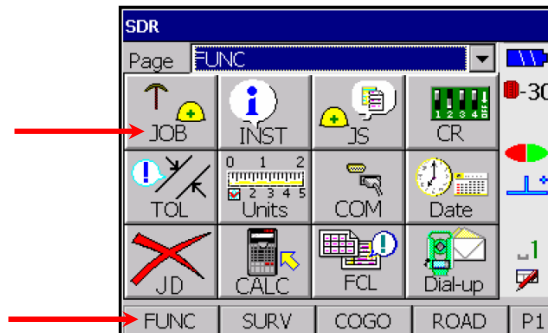


SOKKIA - SETX

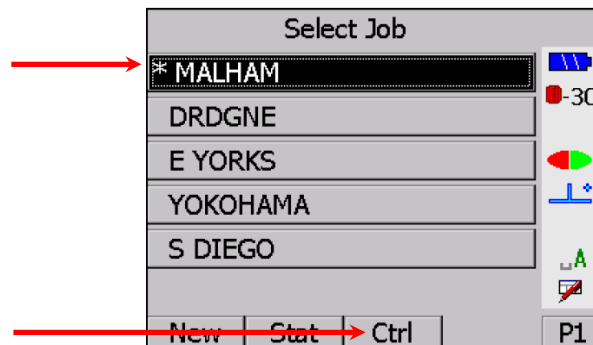
Control Job

- If want to use points that already are present in another job, tag a job to act as the “control job”.
 - Only one job can be tagged as a control job at any one time.

1. Press **PROGRAM**.
2. Select **JOB** from the **FUNCTIONS (FUNC)** menu.



3. Highlight the job then press **Ctrl (F3)**. An asterisk (*) will be showed to indicate that job has been selected as the control job. To deselect the job as a control job, press **Ctrl (F3)** again.



** An optimal way to use the control job facility is to create a special control job which stores all the control point coordinates that most often use and give them unique point names.